



# Pleasington GOLF CLUB

good 2 great programme

## Hole 4 - Proposals



- Thin out existing copse - retain single birch.
- Possibly rebuild green on angle to give greater visibility from fairway and get rid of ugly swale on left**
- Enlarge existing front-right greenside bunker to protect new green.
- Retain copse to protect 5th tee.
- Remove bunker and lower ground beyond so that the right green bunker can be seen.
- Remove winter green
- Remove bunker and form new bunker further up fairway.
- Raise base of bunker by around 50cms and remodel.
- Remodel existing bunker.
- Widen fairway to right.

**Possibly move Ladies tee – further consultation required**

- Bt
- Widen tee at front to 10m width.
- Raise rear tee by around 30cms.

Par 4/5, SI 1/3

432 432 422 ~~401~~  
385/par 4





# Pleasington GOLF CLUB

good <sup>2</sup> great programme

## Hole 5 - Proposals



Extend green at left rear by ~ 2 yds. Form swale above to divert water.

Remove front left bunker and extend green by ~ 2 yds.

Remodel front right bunker.

Build new heather-clad approach bunker.

Thin copse to three good Oaks.

Build new approach bunker.

Remodel bunker - add heather to top.

Selectively thin out trees along woodland edge.

Remove bunker and extend fairway into this area.

Remodel bunker and form ridge on right with some heather on top to reduce visibility of new road.

Build new fairway bunker.

Selectively thin out trees along woodland edge.

Establish heather to accentuate ridge.

Remove small Oak.

Build new forward tee, 30cms higher than the existing one.

Build a new back tee for the Blue and White markers which is raised around 50cms.

Par 5, SI 4

<del>574</del>	<del>559</del>	530	493
568	560		





# Pleasington GOLF CLUB

good 2 great programme

## Hole 6 - Proposals



- Create a grass hollow in place of bunker with heather turf in face on bank beyond.
- Remodel bunker and remove one in front to create gap for running ball.
- Remodel left green bunkers and reduce this one a yard or so from right.
- Shape ground to provide kick towards green for long, accurate drive.
- Build central bunkers to split fairway.
- Level high ground on right to create upper fairway and open up quarry to view from the tee as a feature of the hole.
- Establish heather by removing nutrient-rich layer.
- Remove existing fairway bunkers which separate fairways and form hummocks in their place.



Hole 6 - proposals for new bunkers & upper fairway

Par 4, SI 13

310 305 295 269





# Pleasington GOLF CLUB

good 2 great programme

## Hole 7 - Proposals



Remodel greenside bunker, reducing in size from left and rear. Form supporting mound at back.

Remodel bunker.

Reduce size of bunker from front and form low ridge / hummocks as extension of existing ridge on right.

Remove most of birch trees on boundary to open up views of countryside and stone wall, and establish heather in gaps.

Clear hill side of trees (mainly birch regeneration) and expand area of heather.

Retain two oaks to accentuate split fairway in landing area.

Cut back brow of slope to provide view of fairway from further back and kick forward for a ball landing here.

Create plateau for lower fairway by filling out on right.

Form heather-clad 'step' between fairway sections.

Par 5, SI 3/1

518 518 498 474





# Pleasington GOLF CLUB

good 2 great programme

## Hole 8 - Proposals



Form drained hollow with gully pot.

Clear trees on slope to open up view of viaduct.

Remove most of trees to right of green.

Remodel bunkers and remove tree to side of left one.

Create plateau short of green to form flatter approach landing area.

Define the bank to the right of the green as a red-staked lateral hazard and provide a dropping zone for golfers in this area.

Clear Silver birch regeneration and pines further up.

Remove birch and nearby bush.

Re-grade tee with slope to rear and lower back edge by up to 50cm by doing so.

Remove trees to open up view toward viaduct and river.

Lower tee ~ 30cm and enlarge.

Par 3, SI 15/17

191 164 145 128

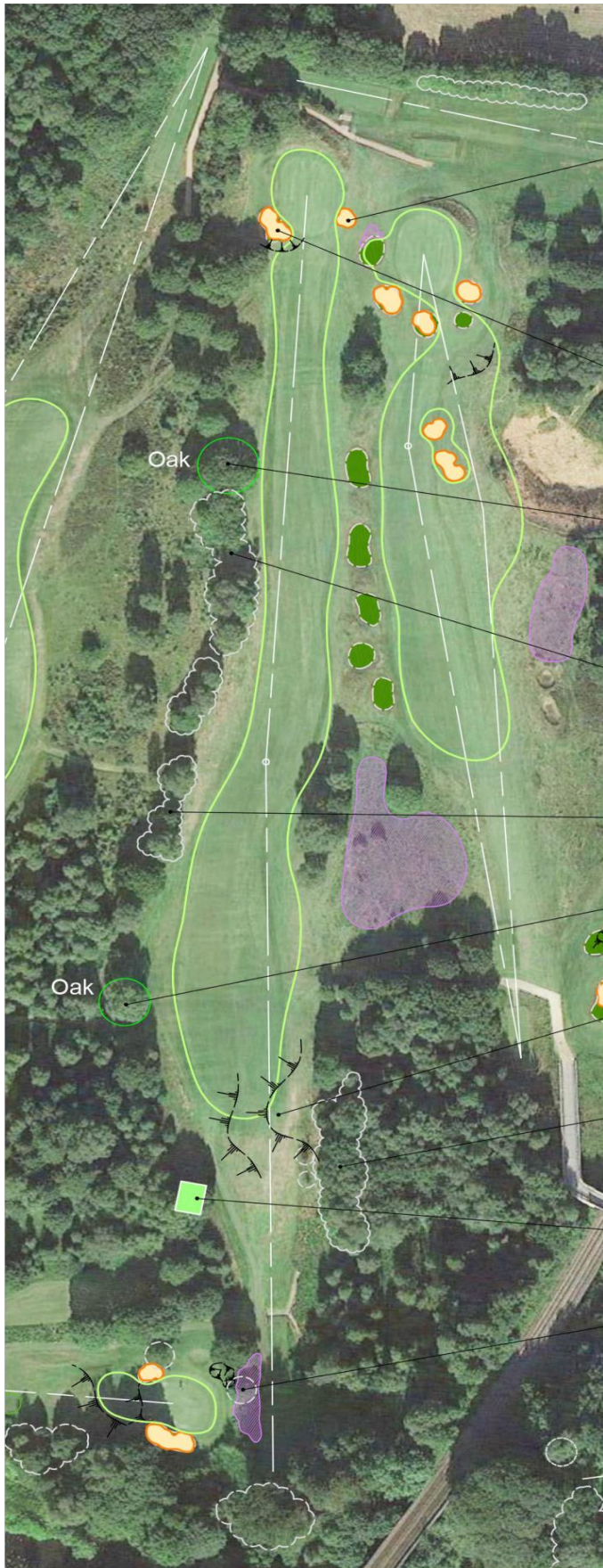




# Pleasington GOLF CLUB

good 2 great programme

## Hole 9 - Proposals



Form new bunker.

Remodel bunker. Reduce in size from left and rear.

Retain Oak.

Clear trees on lower slopes and birch regeneration.

Clear trees.

Retain Oak which marks left side of fairway from tee.

Lower ridge-line by 1.5m or so for better view from tee.

Thin out edge of woodland to best trees further back.

Build new Red tee if ridge lowered.

Remove tree which is encroaching on line from back of tee and establish heather on bank of tee.

Par 5, SI 9/5

487 487 470 ~~460~~  
375





# Pleasington GOLF CLUB

good 2 great programme

## Hole 10 - Proposals



Extend green at left-rear by ~ 5yds.

Cut base of bank closer to green.

Lower ground between bunkers and remodel both bunkers.

Remodel bunker.

Replace cross bunker with smaller one to right of centreline to allow space to run ball into left of green.

**build some mounding to add feature in the foreground with fescue and heather**

Remove edge trees which are growing across line of play.

Locate Red markers on front of main tee and keep forward tee for winter use. Move Yellow markers back.

Thin out trees around tee.

Par 3, SI 12/18

190	190	<del>167</del>	<del>140</del>
		175	160



# Pleasington GOLF CLUB

good 2 great programme

## Hole 11 - Proposals



- Extend green to a couple of yards to right-rear.
- Remodel greenside bunker and reduce in size by around 4-5 yards at the rear.
- Remodel greenside bunker. Reduce in size by a few yards at front.
- Remove bunker and form some low mounds on left side.
- Build new approach bunker.
- Remove nutrient-rich layer and establish heather.
- Build new heather-clad bunker set into existing low ridgeline.
- Remove Rhododendron.
- Build new heather-clad bunker.
- Remove existing bunkers and widen fairway in this direction.

Remove lone tree.

Par 4, SI 7/9

352 342 331 319

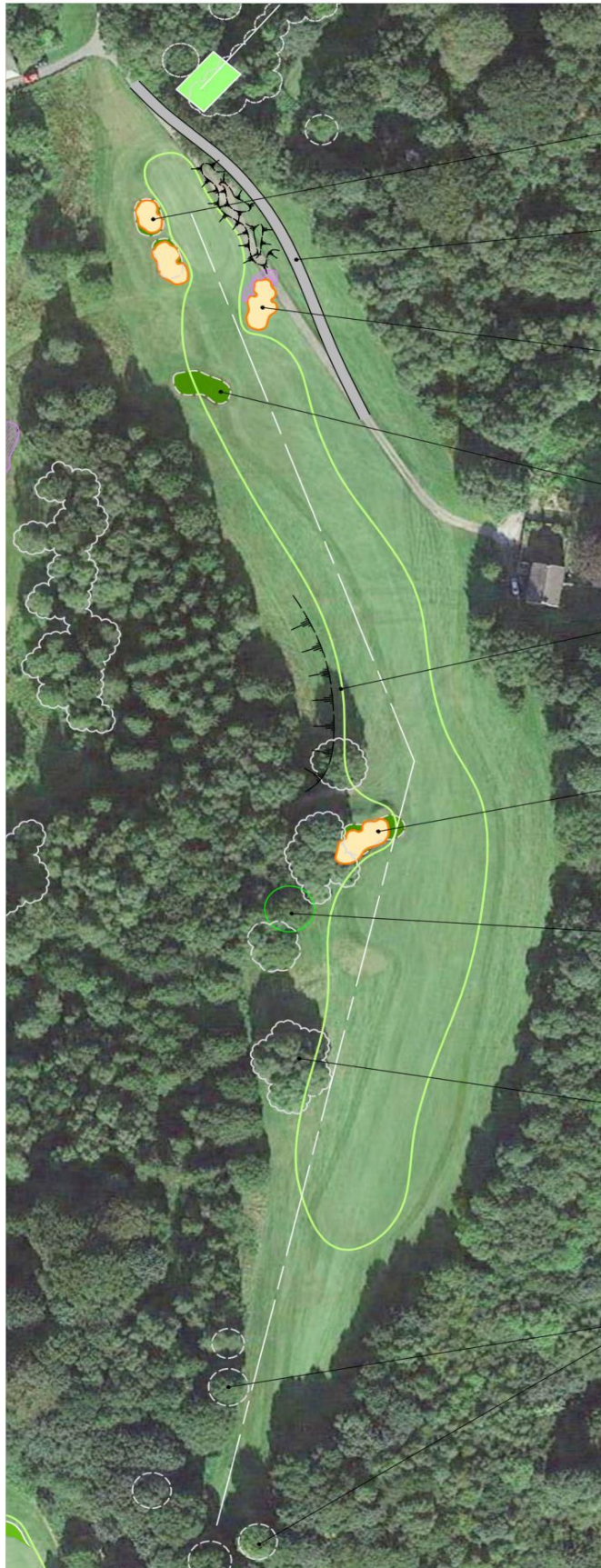




# Pleasington GOLF CLUB

good 2 great programme

## Hole 13 - Proposals



Remodel green-side bunkers.

Rebuild track further over and create some mounding to separate it from the green.

**This bunker will NOT be added after discussions**

Fill in bunker.

Fill out slope to create fairway landing area for shot over bunker.

Remove trees to left of existing bunker and rebuild bunker a few yards further left.

Clear around fine Oak to make it a feature on the edge of the woodland.

Remove mainly Birch copse and mow fairway further left.

Thin trees around tees where possible.

Par 4/5, SI 2/6

459 459 451 444





# Pleasington GOLF CLUB

good 2 great programme

## Hole 14 - Proposals



Build new bunker to right of green.

Lower ground at mouth of bunker and remodel. Remove nearby sycamore tree.

Rebuild bunker closer to green.

Remove front two bunkers.

Break up tree line by removing poorer specimens.

Build new drive bunker in face of bank, remove birch trees to left and establish area of heather.

Clear trees through valley and for proposed new 15th green location.

Clear trees near tee.

Possibly move back to the semi built tee in the woods – cost, trees and view dependent

Par 4, SI 14/10

~~387~~ 387 376 306  
405 405





# Pleasington GOLF CLUB

good 2 great programme

## Hole 15

Replace bunker with mounding.

Fill in rear third of bunker and reshape, extending a yard or two to front-left.

**Move road down to create fairer landing area and extend the apron**

Remove birch trees and establish heather on ridge

Thin trees & widen fairway.

Build new fairway bunker.

Remove existing fairway bunker.

Move fairway to right.

Remove trees and bushes to left of large Oak.

Lower ground in front and to left of quarry to open out to view and establish heather on left banks.

Build new Red tee.

Probably move across to site nearer the winter tee to make whole more of a dogleg and open up walkway through quarry

Par 4, SI 6/2

354 354 349 ~~351~~  
300







# Pleasington GOLF CLUB

good 2 great programme

## Hole 17 - Proposals

Replace left green bunker with a single one between and widen left side of green by a yard or so.

Remodel green bunkers.

Reshape bunker and remove tree which lies in front of it.

Remove tree.

**REMOVE ALL THE ROAD DOWN TO PAST THE 18TH TEE**

Establish heather to left of fairway.

Remove selected trees to each side of drive.

**NOTE: The road will be removed from the junction going across the fourth all the way down to the pitching green**

Par 4, SI 8

378 366 351 340



# Hole 18 - Proposals



Shape as slight hollow and install gully pot in base to stop surface water reaching bunker.

Remodel and reduce both bunkers in size from the front. Reshape area between bunkers to allow for surface water removal.

Reduce size of bunker from front.

Install new bunker in face of slope with mounding behind to deflect surface water either side.

Remove front bunker and set second one deeper in slope to open up view of third one.

Form echelon of bunkers extending into fairway with some heather on the faces.

Remove single Poplar and some of smaller trees.

Remove two or three trees on inside of dogleg to create view through to new bunkers.

Extend ditch between fairways.

this one is fine & complete

Remove trees on right side of copse to provide view down left of fairway.

**EXTEND TEE AREA FROM CURRENT TEE ACROSS THE ROAD TO WIDEN IT & SOFTEN THE DOG LEG SLIGHTLY**

Par 4, SI 10/12

377 377 369 ~~362~~  
330